

**CruzMail Performance Measures
Quarterly Report**

October - December 2008

SLA Reporting: Performance Measures are part of the Service Level Agreement for CruzMail.

These measures are defined in Section Seven of the SLA.

These performance measures are: System Performance, System Availability and Support Responsiveness.

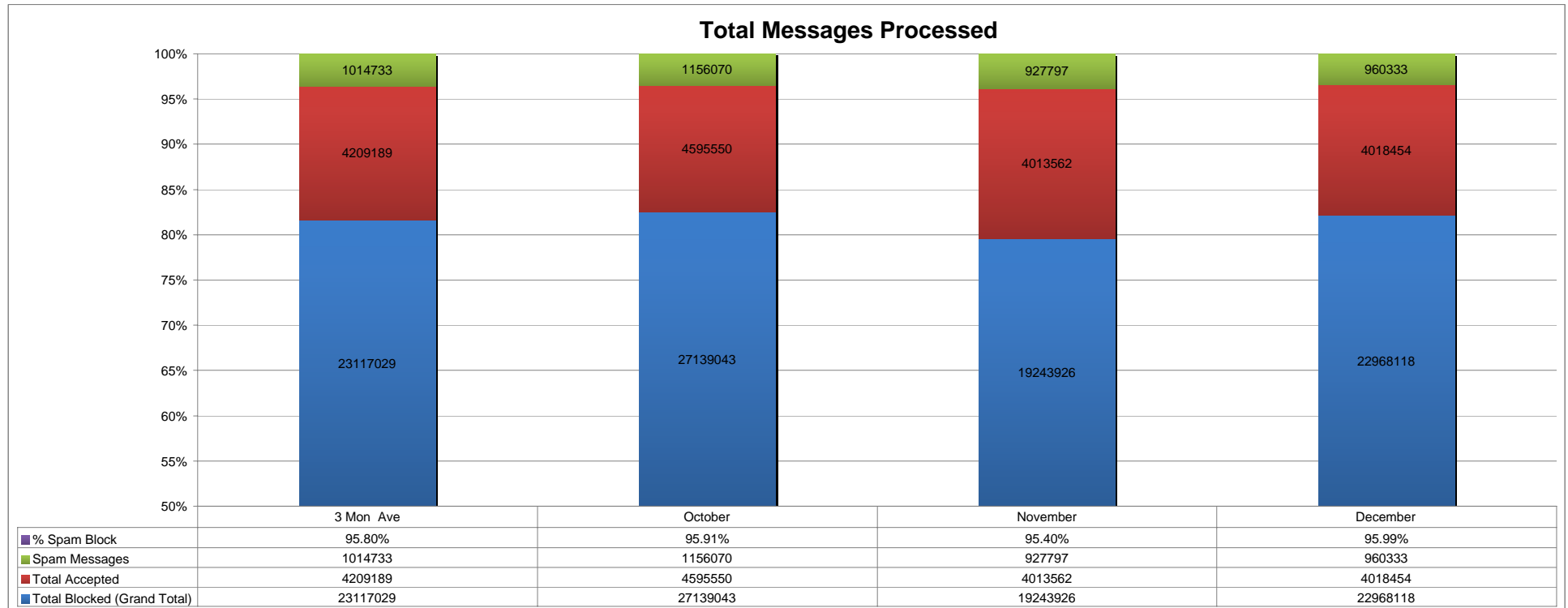
1. Performance Indicators: Email and Spam as trend indicators of general processing performance

What are these graphs? Messages process reporting graphs report the quantity of processing, blocking and marking of email.

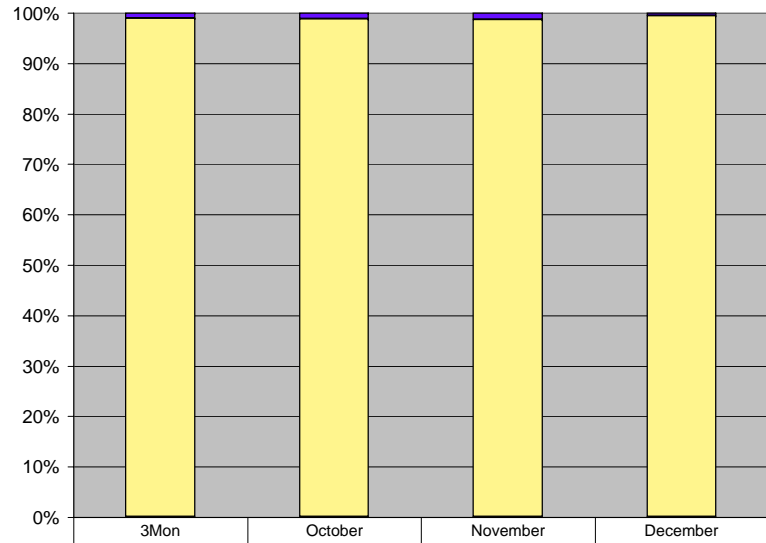
Where does the information come from? This information is retrieved from our email scanning statistics.

How do we use this information? This information is used to track the trends of email and spam.

Goal: Using commercially available block lists we will block 85% of spam.

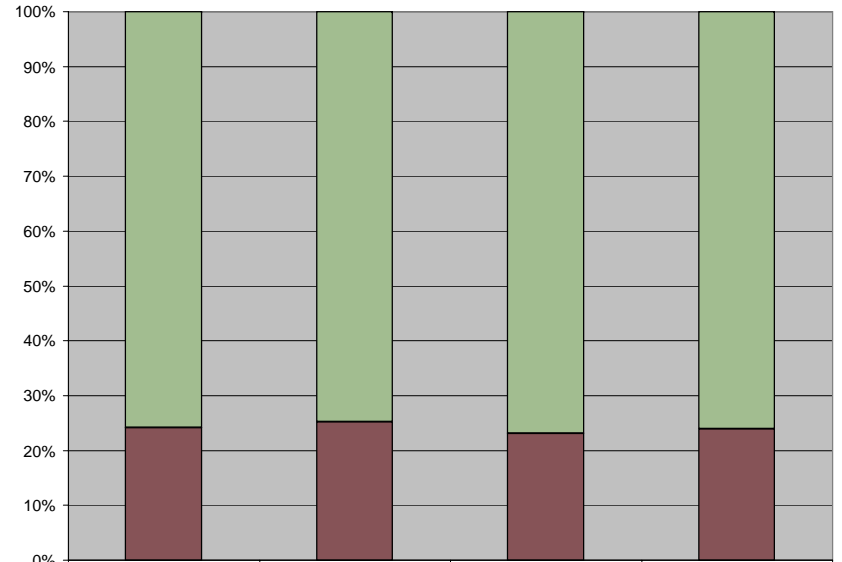


Blocked Message Chart
(% by SPAM checking method)



| Method | 3Mon | October | November | December |
|------------------------|-------|---------|----------|----------|
| Had Virus | 0.8% | 1.0% | 0.9% | 0.4% |
| Had Bad Attachments | 0.0% | 0.0% | 0.0% | 0.0% |
| Blocked by RBL | 78.5% | 79.9% | 75.5% | 79.3% |
| Blocked at Greet Pause | 0.1% | 0.1% | 0.1% | 0.1% |

Delivered Messages Chart
(% marked and unmarked)



| Category | 3Mon | October | November | December |
|-------------|-------|---------|----------|----------|
| Not Spam | 75.9% | 74.8% | 76.9% | 76.1% |
| Marked Spam | 24.1% | 25.2% | 23.1% | 23.9% |

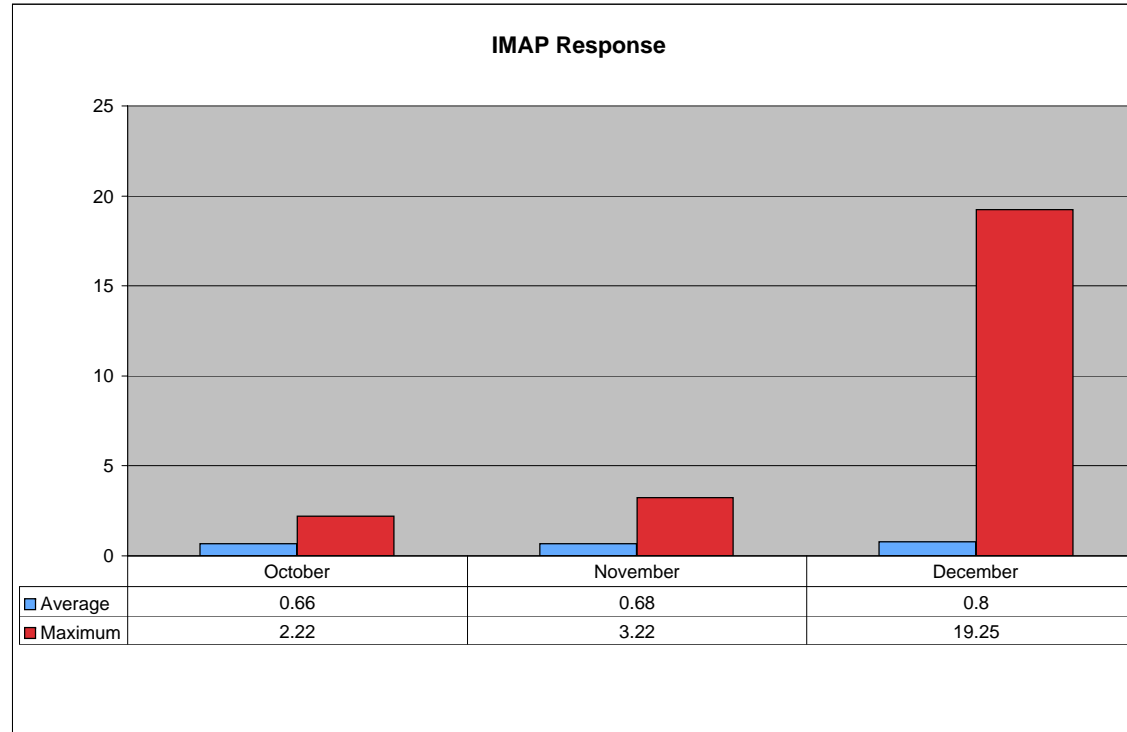
2. Performance Indicators: System Responsiveness

What is this graphs? The IMAP Response reporting graphs track the timeliness and responsiveness of the email system.

Where does the information come from? This information is retrieved from our mail statistics scanning.

How do we use this information? This information is used to track the speed of CruzMail response time and identify slow periods.

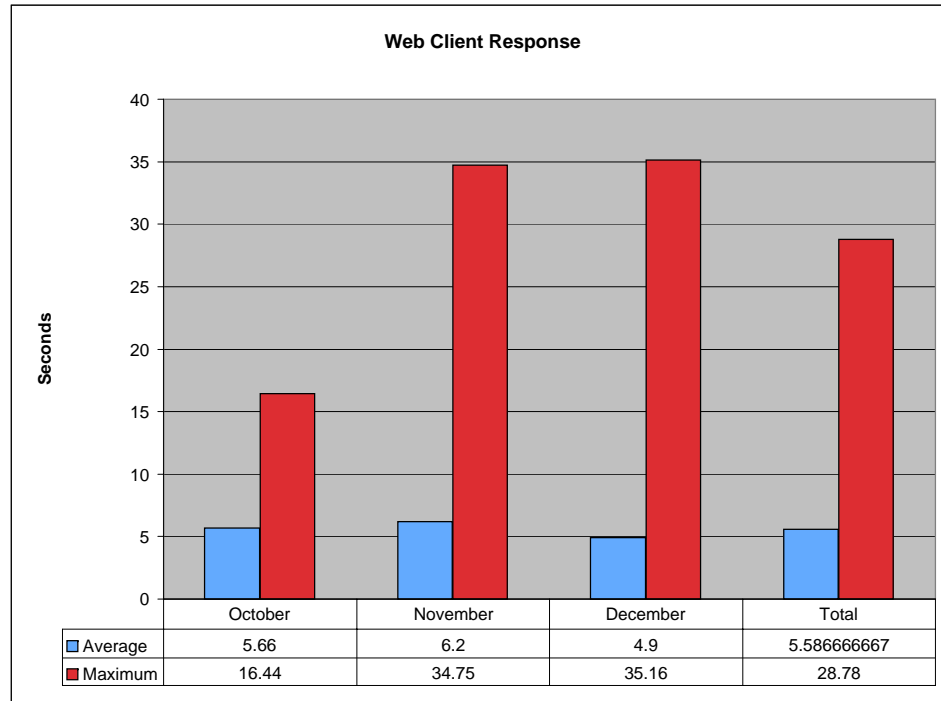
Goal: IMAP Response is to be under 4 seconds 95% of the time for optimal performance.



Note: Of a total 132,480 minutes in Oct, Nov and Dec, IMAP response times of more than 4 seconds were seen for approx. 420 minutes. This calculates to 99.7% of IMAP response under 4 seconds.

Note 2: Stats were not collected for approximately 2 hours on 12/3, and 1 hour on 12/20.

Web Client Response



4. Support Response time separately reported as part of the Global Metrics

Goal: First response within 8 business hours